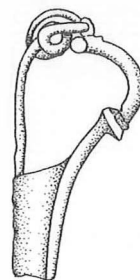
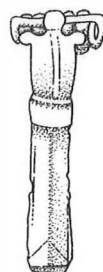
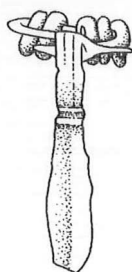
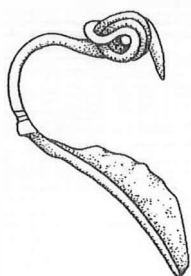


# PALAEOHISTORIA

43/44



2001/2002

# PALAEOHISTORIA

# PALAEOHISTORIA

*ACTA ET COMMUNICATIONES  
INSTITUTI ARCHAEOLOGICI  
UNIVERSITATIS GRONINGANAE*

43/44

2001/2002



A.A. BALKEMA PUBLISHERS / LISSE / ABINGDON / EXTON (PA) / TOKYO

*Editorial staff:* P.A.J. Attema, Mette Bierma, J.N. Lanting, A.J. Nijboer & Miriam Los-Weijns  
*Address:* Groningen Institute of Archaeology, Poststraat 6, 9712 ER Groningen, Netherlands

Typesetting: Palm Producties, Nieuwerkerk a/d IJssel, The Netherlands  
Printed by: Grafisch Productiebedrijf Gorter, Steenwijk, The Netherlands

Copyright © 2003 Swets & Zeitlinger B.V., Lisse, The Netherlands

*All rights reserved. No part of this publication or the information contained herein may be reproduced, stored in a retrieval system, or transmitted in any form or by any means, electronic, mechanical, by photocopying, recording or otherwise, without written prior permission from the publishers.*

*Although all care is taken to ensure the integrity and quality of this publication and the information herein, no responsibility is assumed by the publishers nor the author for any damage to property or persons as a result of operation or use of this publication and/or the information contained herein.*

ISBN 92 5809 550 9

# CONTENTS

H. WOLDRING & S. BOTTEMA The vegetation history of East-Central Anatolia in relation to archaeology: the Eski Acıgöl pollen evidence compared with the Near Eastern environment	1
J. VAN DER PLICHT, H.J. STREURMAN, S. BOTTEMA & E. MOOK-KAMPS Wildervank-Zandplas III: an investigation using natural isotopes	35
A.L. BRINDLEY, J.N. LANTING & A.D. NEVES ESPINHA <i>Hunebed</i> D6a near Tinaarlo	43
W. VAN ZEIST Plant husbandry and vegetation of tell Gomolava, Vojvodina, Yugoslavia	87
J.N. LANTING & J. VAN DER PLICHT De <sup>14</sup> C-chronologie van de Nederlandse pre- en protohistorie, IV: bronstijd en vroege ijzertijd	117
J. J. BUTLER & HANNIE STEEGSTRA Bronze Age metal and amber in the Netherlands (III:2): Catalogue of the socketed axes, part A	263
P.A.J. ATTEMA, A.J. BEIJER, M. KLEIBRINK, A.J. NIJBOER & G.J.M. VAN OORTMERSSEN Pottery classifications: Ceramics from <i>Satricum</i> and Lazio, Italy, 900–300 BC	321
P.M. VAN LEUSEN & P.A.J. ATTEMA Regional archaeological patterns in the Sibaritide; preliminary results of the RPC field survey campaign 2000	397
R.F. DOCTER, E. SMITS, T. HAKBIJL, I.L.M. STUIJTS & J. VAN DER PLICHT Interdisciplinary research on urns from the Carthaginian tophet and their contents	417
M.C. GALESTIN Winsum-Bruggeburen, second report on the excavation. The Roman pottery	435
M.C. GALESTIN Winsum-Bruggeburen, third report on the excavation. Bronze and other Roman finds	469
S. BOTTEMA, F. BOTTEMA, R. CAPPERS & C.G. KOOPSTRA Eggs from early Sneek	483