

PALAEOHISTORIA

PALAEOHISTORIA

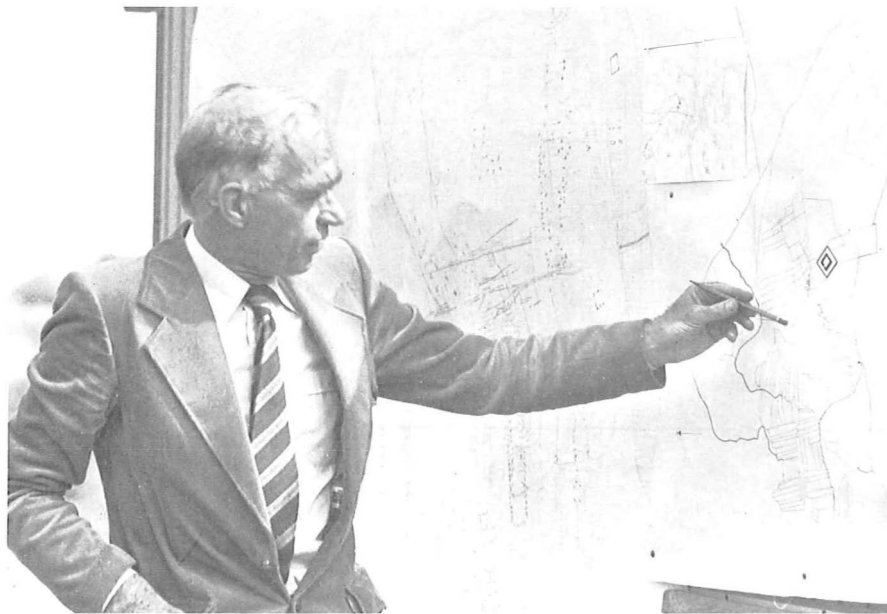
*ACTA ET COMMUNICATIONES
INSTITUTI BIO-ARCHAEOLOGICI
UNIVERSITATIS GRONINGANAE*

XXI

FIBULA-VAN DISHOECK · HAARLEM

1979

THIS VOLUME IS DEDICATED
at the Biologisch-



to Harm Tjalling Waterbolk
appointed Professor of Prehistory and Germanic
Archaeology at the University of Groningen
8 October 1954.
A quarter-century of research by the B.A.I. has
profited from his initiative, scientific mind and vision.

BY THEIR COLLEAGUES AND FRIENDS
Archaeologisch Instituut



and to Harm Praamstra
appointed member of the staff of the B.A.I.
2 October 1939.
40 years of B.A.I. excavations have benefited from his
talents for drawing and interpretation in the field,
behind the drafting table, and as author.

Editorial staff: Mette Bierma, J. W. Boersma,
H. R. Roelink, J. D. van der Waals
Technical assistance of tables and lithography:
Jac. Klein
Address: Biologisch-Archaeologisch Instituut,
Poststraat 6, 9712 ER Groningen, the Netherlands

© 1978 Unieboek B.V. Bussum

Niets uit deze uitgave mag worden veeveelvuldigd en/of openbaar gemaakt door middel van druk, fotocopie, microfilm op op welke andere wijze ook zonder voorafgaande toestemming van de uitgever.

No part of this book may be reproduced in any form by print, photoprint, microfilm or any other means without written permission from the publisher.

ISBN 90 228 3643 6

CONTENTS

W. G. MOOK, A. F. M. DE JONG, & H. GEERTSEMA Archaeological implications of natural carbon-14 variations	9
SYTZE BOTTEMA Pollen analytical investigations in Thessaly (Greece)	19
A. T. CLASON The farmers of Gomolava in the Vinča and La Tène period	41
D. C. BRINKHUIZEN Preliminary notes on fish remains from archaeological sites in the Netherlands	83
WIETSKE PRUMMEL Environment and stock-raising in Dutch settlements of the Bronze Age and Middle Ages	91
SHEILA VAN GELDER-OTTWAY Faunal remains from Dokkum	109
DICK STAPERT The hand-axe from Drouwen (Province of Drente, the Nether- lands) and the upper Acheulian	127
P. H. DECKERS The flint material from Swifterbant, Earlier Neolithic of the Northern Netherlands. I. Sites S-2, S-4 and S-51. Final reports on Swifterbant II	143
O. H. HARSEMA Two Neolithic stone-axe roughouts from the Province of Drenthe	181
JAY J. BUTLER A Late Bronze Age drawing instrument?	195
W. A. VAN ES Odoorn: frühmittelalterliche Siedlung. Das Fundmaterial der Grabung 1966	205

H. T. WATERBOLK & O. H. HARSEMA	
Medieval farmsteads in Gasselte (Province of Drenthe) . . .	227
WILLEM VAN ZEIST & RITA M. PALFENIER-VEGTER	
Agriculture in Medieval Gasselte	267
G. DE LEEUW	
De Drentse nabootsers van archeologica rond 1900	301

W. A. CASPARIE & W. GROENMAN-VAN WAATERINGE
 Palynological analyses of Dutch barrows

was also prepared for publication in this volume, but unfortunately
has had to be held over for *Palaeohistoria* XXII, 1980