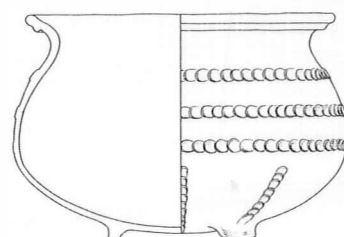
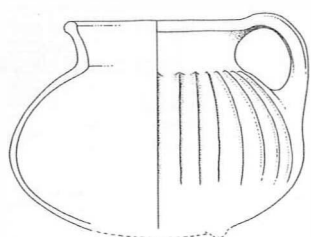


PALAEOHISTORIA

32



1990

PALAEOHISTORIA

PALAEOHISTORIA

*ACTA ET COMMUNICATIONES
INSTITUTI BIO-ARCHAEOLOGICI
UNIVERSITATIS GRONINGANAE*

32



A.A. BALKEMA/ROTTERDAM/BROOKFIELD/1990

Editorial staff: Mette Bierma, J.W. Boersma, J. N. Lanting & Miriam Weijns
Address: Biologisch-Archaeologisch Instituut, Poststraat 6, 9712 ER Groningen, Netherlands

Published by
A.A. Balkema, P.O. Box 1675, 3000 BR Rotterdam, Netherlands
A.A. Balkema Publishers, Old Post Road, Brookfield, VT 05036, USA

ISSN 0552-9344

ISBN 90 5410 136 9

© 1993 A.A. Balkema, Rotterdam

Printed in the Netherlands

CONTENTS

D. STAPERT	
Middle Palaeolithic dwellings: fact or fiction? Some applications of the ring and sector method	1
E. DRENTH & H. KARS	
Non-flint stone tools from two Late Neolithic sites at Kolhorn, province of North Holland, the Netherlands	21
J.J. BUTLER	
Bronze Age metal and amber in the Netherlands (I)	47
M. MIEDEMA	
Oost-Fivelingo 250 v.C.-1850 n.C. Archeologische kartering en beschrijving van 2100 jaar bewoning in Noordoost-Groningen	111
J. MOLEMA	
De opgravingen op het kerkhof van het verdronken dorp Scheemda	247
W.A. CASPARIE & J. MOLEMA	
Het middeleeuwse veenontginningslandschap bij Scheemda	271
W.A. CASPARIE	
Scheemda, the wood remains of the drowned village at the 'Oud Kerkhof' site	291
W. PRUMMEL	
Draught horses and other animals at late-medieval Scheemda	299
J. SCHELVIS	
Mites from medieval Scheemda	315
H.T. UYTTERSCHAUT	
The human skeletons from the late-medieval graveyard of Scheemda	323
J.P. KOERS, J.N. LANTING & J. MOLEMA	
De muntfibula van een Almohadische dobla uit Scheemda: vondstomstandigheden, parallellen en historische context	331