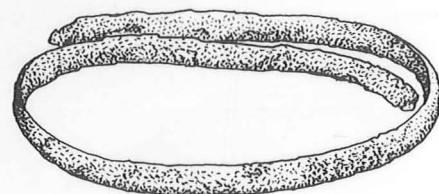
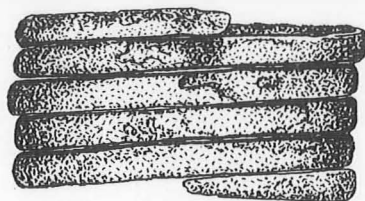
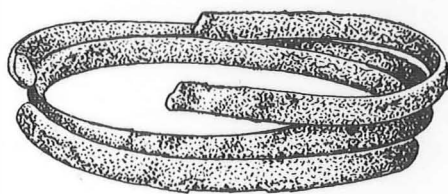


# PALAEOHISTORIA

---

26

---



1984

# PALAEOHISTORIA

# PALAEOHISTORIA

*ACTA ET COMMUNICATIONES  
INSTITUTI BIO-ARCHAEOLOGICI  
UNIVERSITATIS GRONINGANAE*

26



A.A.BALKEMA / ROTTERDAM / BOSTON / 1984

*Editorial staff:* Mette Bierma, J.W.Boersma, H.R.Roelink & J.D.van der Waals  
*Address:* Biologisch-Archaeologisch Instituut, Poststraat 6, 9712 ER Groningen,  
Netherlands

CIP-DATA KONINKLIJKE BIBLIOTHEEK, DEN HAAG

Palaeohistoria

Palaeohistoria: acta et communicationes / Instituti bio-archaeologici universitatis Groninganae.

Vol. 1 (1951) – . . . . – Rotterdam [etc.]: Balkema

Appears annually

ISSN 0552-9344

Palaeohistoria 26: 1984 / [ed. Mette Bierma . . . et al.]. – Ill.

ISBN 90-6191-626-7

SISO 576 UDC 56

Subject heading: palaeontology.

ISSN 0552-9344

ISBN 90 6191 626 7

© 1986 A.A.Balkema, P.O.Box 1675, 3000 BR Rotterdam, Netherlands

Distributed in USA & Canada by: A.A.Balkema Publishers, P.O.Box 230, Accord, MA 02018

Printed in the Netherlands

## CONTENTS

R.R.NEWELL & T.S.CONSTANDSE-WESTERMANN Population growth, density and technology in the Western European Mesolithic: Lessons from analogous historical contexts	1
J.J.BUTLER & EMILY SCHALK Dömsöd: Ein frühbronzezeitliches Urnengräberfeld in Ungarn	19
W.A.CASPARIE The three Bronze Age footpaths XVI (Bou), XVII (Bou) and XVIII (Bou) in the raised bog of Southeast Drenthe (the Netherlands)	41
J.A.CHARLES The Middle Bronze Age iron punch of Southeast Drenthe	95
A.L.VAN GIJN & H.T.WATERBOLK The colonization of the salt marshes of Friesland and Groningen: The possibility of a transhumant prelude	101
S.BOTTEMA & H.WOLDRING Late Quaternary vegetation and climate of Southwestern Turkey. Part II	123
W.VAN ZEIST & J.A.H.BAKKER-HEERES Archaeobotanical studies in the Levant 2. Neolithic and Halaf levels at Ras Shamra	151
W.VAN ZEIST & J.A.H.BAKKER-HEERES Archaeobotanical studies in the Levant 3. Late-Palaeolithic Mureybit	171
W.VAN ZEIST, P.E.L.SMITH, R.M.PALFENIER-VEGTER, M.SUWIJN & W.A.CASPARIE An archaeobotanical study of Ganj Dareh Tepe, Iran	201